

Administration Instructions: How to Use Dihydroergotamine Mesylate Nasal Spray

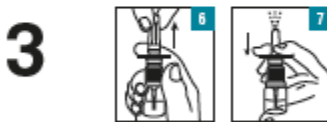
NOTE: Do not assemble the nasal spray pump unit until the time of use. Once it has been opened, it must be discarded after 8 hours.



1 Lift tab to bend back blue cover (Figure 1). In one piece, completely remove the blue cover and metal seal in a circular motion (Figure 2). Keeping the vial upright, remove rubber stopper (Figure 3). Set vial aside.



2 Remove plastic cover from bottom of pump unit (Figure 4). Insert spray pump into vial and turn clockwise until securely fastened (Figure 5).



3 Remove cap from spray unit (Figure 6). Holding the vial as shown in figure 7, point nasal sprayer away from face and pump 4 times before using (Figure 7). **DO NOT PUMP MORE THAN 4 TIMES** (Although some medication will spray out, there is enough medication in each vial to allow you to prepare your nasal spray pump properly and still receive a full treatment of Dihydroergotamine Mesylate Nasal Spray.)



4 Spray once into each nostril. Do not tilt head back or sniff through your nose while spraying or immediately after. Wait 15 minutes. Spray once again into each nostril. After completing these instructions, carefully dispose of the nasal spray pump with vial.

08/18
933457 USA

 Leucadia™